

## QUICK MANUAL

### XF-AC-RF Remote Control for XF1-XTRACT-AC Ventilation Unit

The Quick Manual guides you through the quick installation of the product, but in no way replaces the complete full manual. The complete operating instructions are available in the documents on our website [www.xvent.cz](http://www.xvent.cz) or you can access them via QR code.



**The installation and wiring of the controller may only be carried out by a trained person with the appropriate authorization for the connection of electrical equipment, who has the appropriate tools and means at his disposal. When assembling, all instructions and recommendations given in this manual must be followed.**

#### 1) Use of remote control

- The remote control is used to switch the fan speed for the XF1-XTRACT-AC ventilation unit.
- The remote control consists of a transmitter (portable, free part) and a receiver (fixed part connected to the XF1-XTRACT-AC unit). Communication between the receiver and transmitter is wireless, using an RF signal (radio frequency). The communication frequency between the receiver and transmitter is 433MHz. The maximum distance between the receiver and transmitter can be up to 50m in the free space.
- The remote control is designed for installation on the wall, for continuous operation, in indoor and dry areas with a room temperature of +5 °C to +30 °C and with a maximum relative humidity of 70% non-condensing. The maximum working altitude of the unit is 2000 m above sea level.

#### 2) Disallowed remote control environments:



- Environments with an increased occurrence or risk of explosion, flammable substances and increased dustiness or air containing other harmful impurities
- in environments with a higher incidence of condensing moisture, such as: bathrooms, swimming pools, saunas, etc.,

#### 3) Technical parameters

	Model	XF-AC-RF
Receiver	Input Power	230VAC / 50Hz, 3A maximum
	Output power	230VAC / 50Hz, 3A maximum
	Communication frequency	433 MHz
	IP rating of electronics / periphery	IP66 / IP20
Transmitter	Power Battery Type	LR23A
	Battery voltage	12VDC
	IP rating	IP20



#### 4) Remote Control Installation

##### - Minimum installation distances

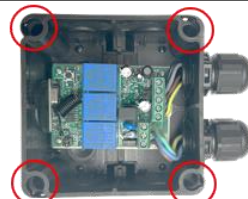
- Installation of the remote control – both receivers and transmitters must be carried out in such a way that a minimum distance of 100 mm from all building structures and flammable substances and distances based on local regulations are maintained.

##### - Mounting the receiver and transmitter on the wall

(a) Turn the locking screws of the box to position 1, open it




(b) Use the mounting holes for attachment



(c) Attach the transmitter bracket with 2x countersunk head screws with a maximum Ø of 3.8mm



#### 5) Electrical installation – connection to the electrical network

 - Before starting any installation work, make sure that your main electrical installation box is equipped with a protective (green-yellow) wire. - Verify that the power supply meets the power requirements of the unit (voltage, current, frequency, etc.) listed on the rating plate of the remote control.

- The relevant circuit must be protected in the power distribution system by a maximum of 6 A. The electrical cable for connection to the mains must not be broken. Local electrical codes must always be respected. The electrical connection of the unit to the mains may only be carried out by persons qualified for this activity with a valid authorization and knowledge of the relevant standards and directives in the given country.

- It must be capable of being locked against unintentional switching (e.g. lockable "off" position during maintenance).

- The supply must be switched off before starting any assembly work. It is forbidden to interfere in any way with the internal wiring of the unit, unauthorized interference with the unit may lead to the loss of warranty. This unit belongs to the product group with a type Y connection. If the power supply is damaged, it must be replaced by the manufacturer, its service center or a similarly qualified person in order to avoid a hazardous situation. The unit is classified as a protection class 1 appliance in terms of protection against electric shock.

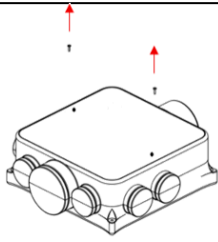
- The supply voltage for the remote control and ventilation units is 1~230V/50Hz and must not be modified in any way, otherwise there is a risk of damage to the electrical elements of the unit.



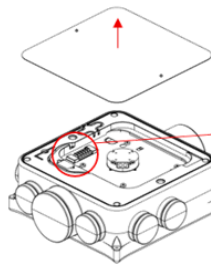
- Make sure that there are no wiring, plumbing, or other wiring at the planned installation site.

**6) Connecting the remote control – receiver to the XF1-XTRACT-AC unit**

1. remove the Ø3.5x20 flat head screw 2x from the unit cover



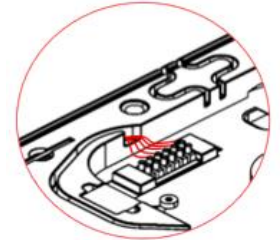
2. Remove the lid from the unit



3. Disconnect the power cord of the unit and remove it from the unit and from the locking



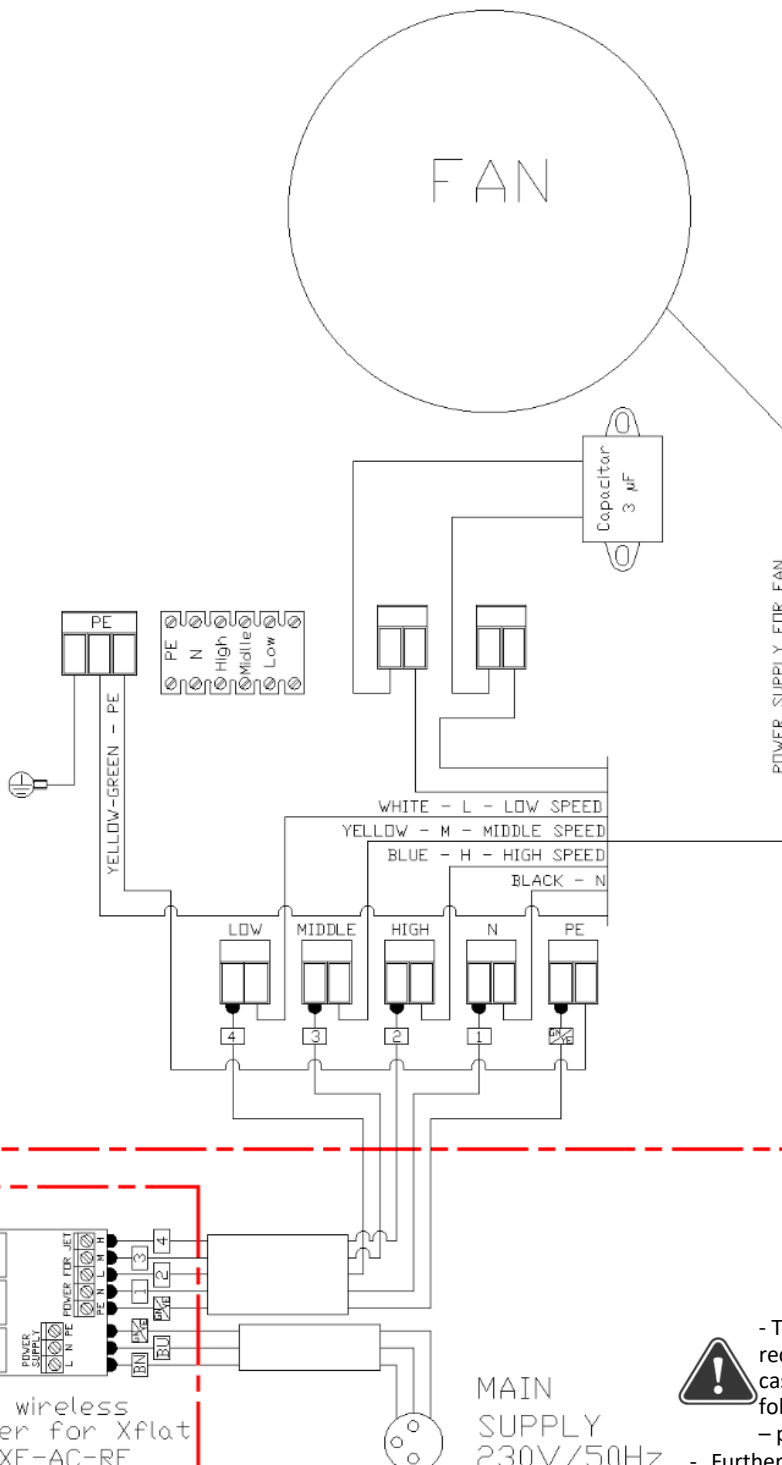
4. Disconnect the cables from the motor on the other side of the inlet terminal



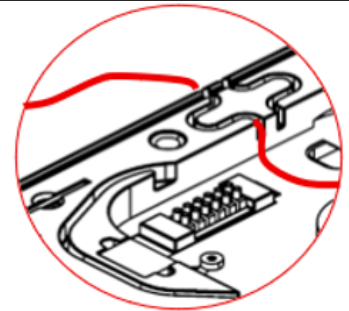
5. Use the connection cable included with the receiver to connect the receiver and the XF1-XTRACT-AC unit

6. The individual wires are numbered and terminated with a connecting terminal for connecting the power cable of the XF1-XTRACT-AC unit.

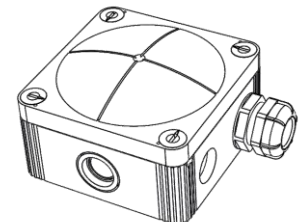
UNIT XFLAT-EXTRACT = AC FAN + XF-AC-RF



8. Insert the connection cable plug from the motor into the locking groove in the body of the unit



9. Place the receiver box near the unit



10. Remove the plastic battery fuse



11. press any speed button - 1 to 3 – the blue LED indicator will light up – the unit will start at the desired speed



4-speed wireless controller for Xflat Xtract XF-AC-RF



- Test the signal strength. The transmitter and receiver are already paired at the factory. In case of communication signal malfunction, follow the full manual located on the website – pairing process

- Further information about the remote control, service instructions is provided in the full manual on the website